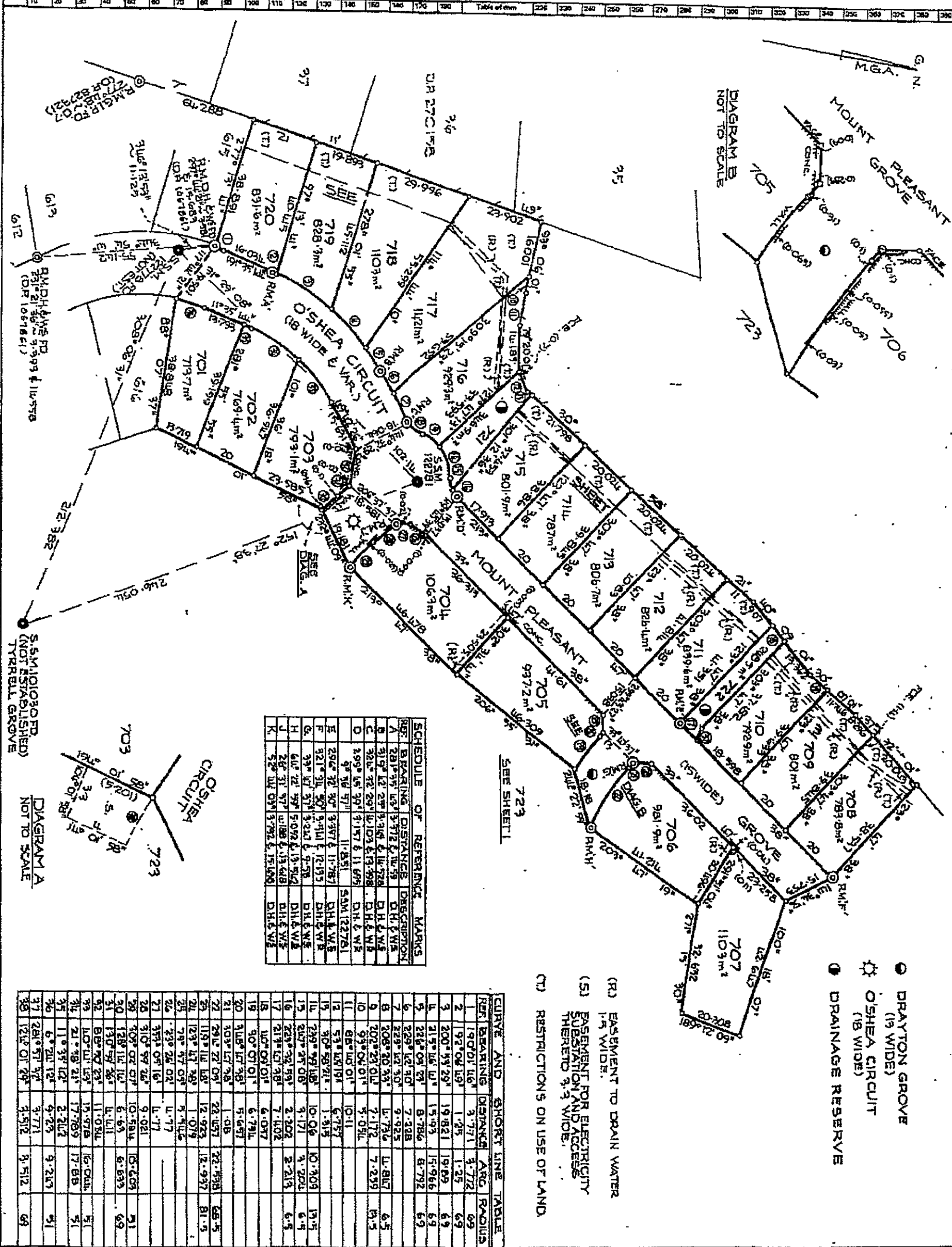


Req:RP267507 /Doc:DP 1072339 P /Rev:18-Oct-2004 /Sts:SC,OK /Prt:19-Oct-2004 11:39 /Pgs:3
 Ref:BT-306511 CCC /Src:L

PLAN FORM 3

To be used in conjunction with Plan Form 2

WARNING: CREASING OR FOLDING WILL LEAD TO REFLECTION



CURVE AND SHORT LINE TABLE

REF.	BEARING	DISTANCE	ARC RADIUS
1	192° 04' 19"	1.25	6.9
2	200° 53' 29"	19.821	6.9
3	215° 46' 14"	15.966	6.9
4	226° 05' 29"	8.792	6.9
5	228° 42' 30"	7.328	6.9
6	229° 42' 30"	9.925	6.5
7	229° 42' 30"	11.817	6.5
8	208° 20' 33"	7.172	6.5
9	208° 20' 33"	7.172	6.5
10	93° 04' 01"	5.081	6.5
11	66° 45' 01"	10.11	6.5
12	53° 45' 19"	6.757	6.5
13	30° 58' 21"	1.815	6.5
14	239° 59' 18"	10.046	19.5
15	345° 25' 08"	9.171	6.5
16	225° 25' 59"	2.202	6.5
17	213° 12' 38"	7.102	6.5
18	100° 09' 01"	6.017	6.5
19	90° 09' 01"	6.731	6.5
20	316° 17' 38"	5.681	6.5
21	303° 17' 38"	1.08	6.5
22	291° 27' 05"	22.457	22.538
23	119° 14' 18"	12.923	12.937
24	123° 14' 28"	1.079	6.5
25	79° 57' 05"	5.411	6.5
26	229° 25' 02"	11.77	6.5
27	315° 05' 16"	11.77	6.5
28	310° 57' 26"	9.021	6.5
29	209° 02' 07"	10.814	10.809
30	128° 11' 14"	6.63	6.9
31	130° 57' 36"	11.081	6.9
32	88° 20' 23"	11.081	6.9
33	110° 11' 23"	19.978	16.011
34	21° 58' 21"	17.789	17.88
35	11° 33' 12"	2.212	6.5
36	6° 21' 12"	9.23	9.213
37	281° 31' 57"	9.771	9.771
38	121° 01' 29"	3.512	3.512

DP1072339
 15-10-2004
 20 FEBRUARY 2004
 C. Gibbs
 17109