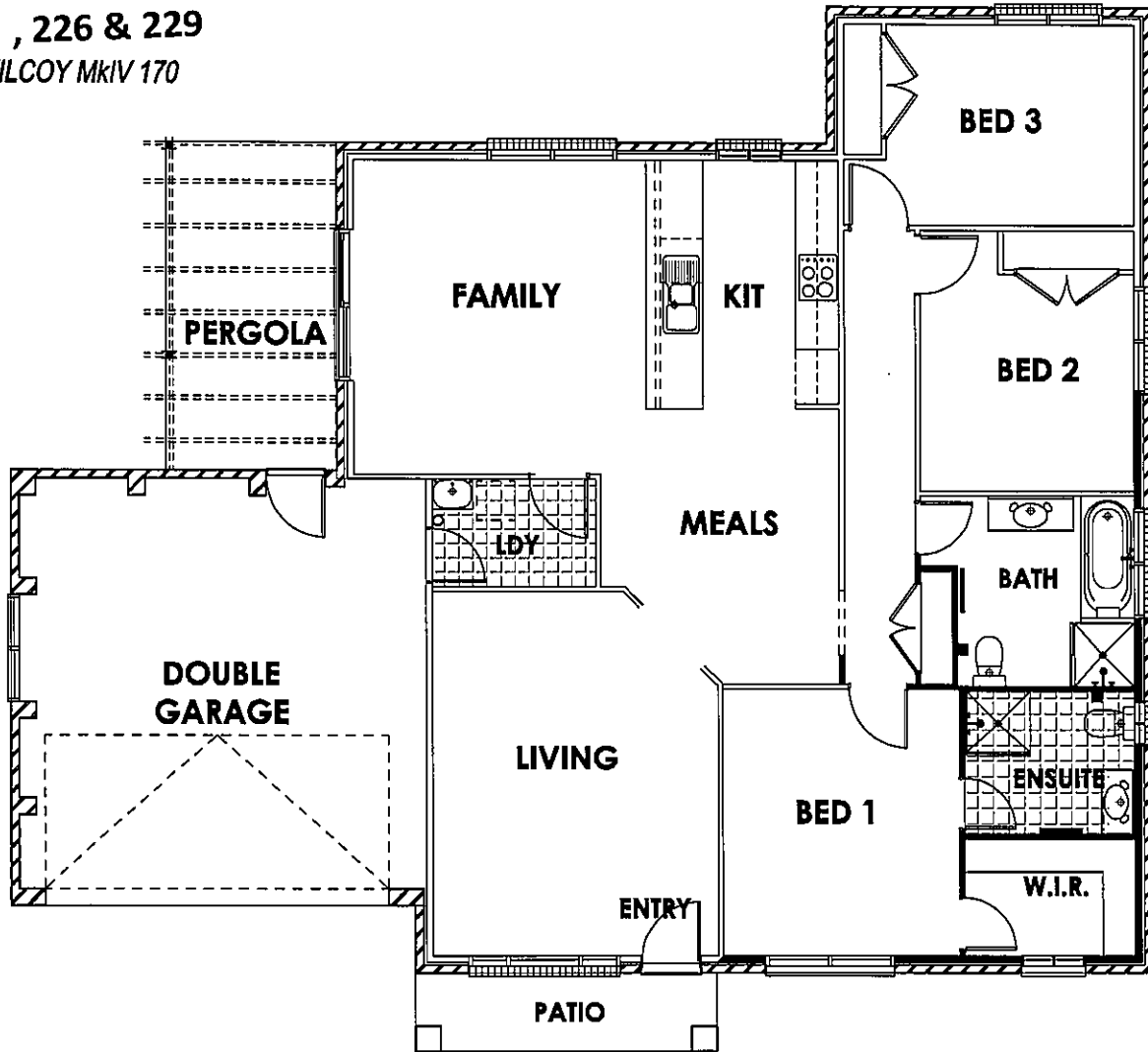


Phone: 02 4352 3899 Fax: 02 4352 3888  
 9 Reliance Drive, TUGGERAH BUSINESS PARK

**217 , 226 & 229**  
 KILCOY MKIV 170

AREAS	
Perimeter	61.0 m
Living	132.0 sq.m
Garage	35.0 sq.m
Patio	4.6 sq.m
Pergola	10.9 sq.m
<b>TOTAL</b>	<b>182.5 sq.m</b>



Design may be substituted following confirmation of services, easements and boundary confirmation.  
 Plan details and final area subject to construction and energy efficiency constraints.